

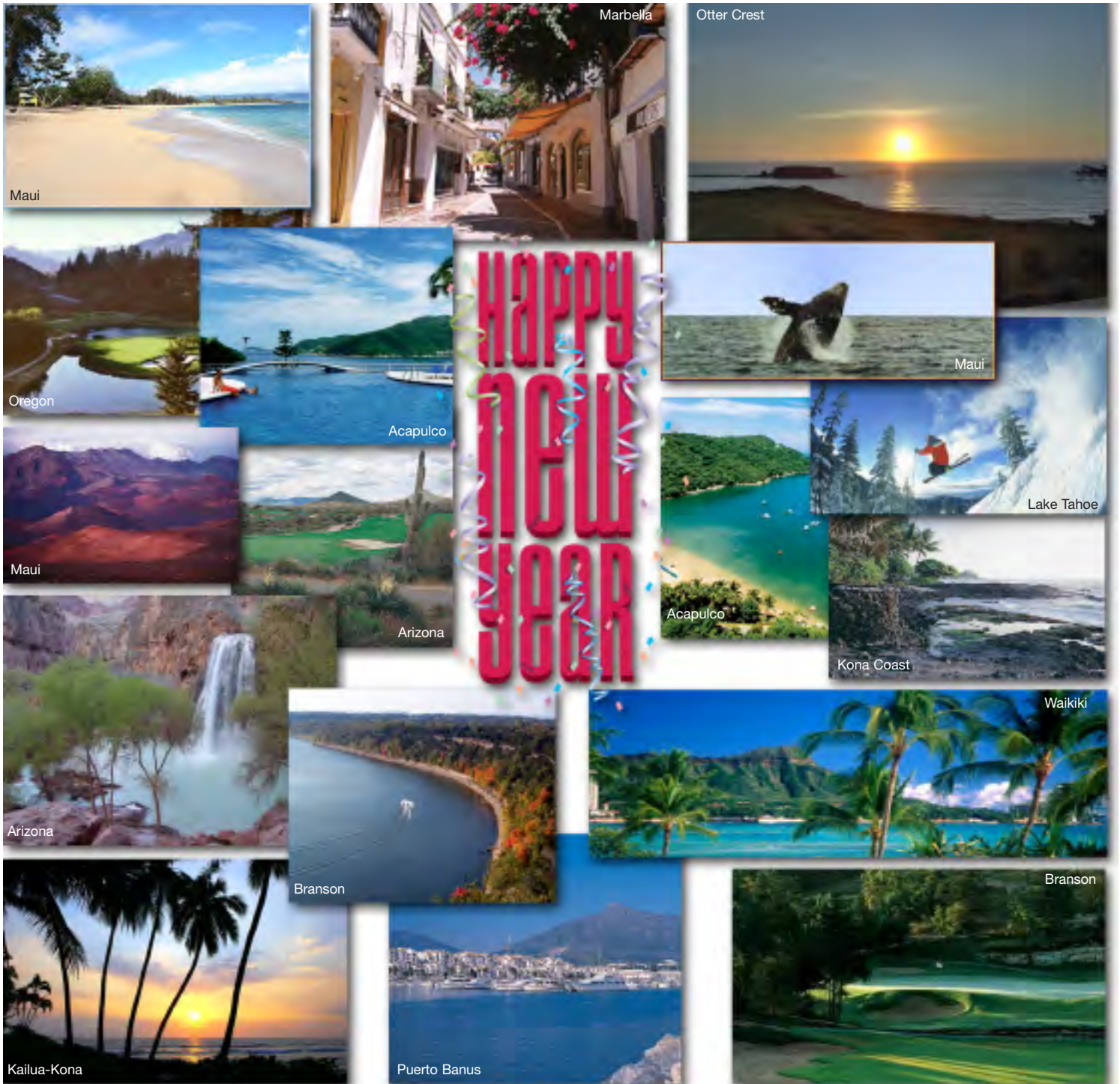
ALOHA KAKOU

May there be friendship between us.

ARIZONA ♦ HAWAII ♦ MEXICO ♦ MISSOURI ♦ NEVADA ♦ OREGON ♦ SPAIN

Royal Aloha Vacation Club Newsletter

Winter 2008



Admire a sunset, take a leisurely hike, go fishing, golfing, skiing . . . enjoy the New Year!

President's Report



Jack Corteway

Although we try to carefully preserve our individual environments, we all have a stake in taking care of the world we share. This *Aloha Kakou* speaks to the importance of "going green" and saving energy. Even our smallest sacrifices can make a difference!

Royal Aloha began switching last year to compact fluorescent bulbs. This conversion keeps our units cooler and saves on energy consumption. The bulbs use about 75% less energy, emit the same light, and last about ten times longer than standard bulbs. And, of course, we all remember to turn off the lights when leaving a room.

As we welcome the new year, let's each resolve to assume a personal responsibility for Royal Aloha's becoming more environmentally conscious.

The staff joins me in thanking those of you who sent seasonal greetings. Everyone has been riding out a really tough economic downturn this year, but we must be optimistic and hold to the belief that the economy will recover in 2009.

On behalf of the board, resort managers and corporate staff, Hau'oli Makahiki Hou! Let's ring in the New Year!

*Mahalo and Aloha,
Jack Corteway*

GOING GREEN!

People around the globe are increasingly becoming aware of the need to protect our planet by conserving energy and our water resources.

Royal Aloha members can join forces to become stewards of the Club's environment and collectively preserve a better quality of life

for future generations. Teamwork will provide healthier living for all and trim costs in these difficult times.

Here are some energy-saving, earth-friendly reminders to help Royal Aloha become environmentally responsible:

APPLIANCES

Range/Oven/Microwave

- Turn off the cooktop/oven a few minutes before the food is completely cooked; let the retained heat finish the cooking.
- Do not preheat oven unless baking.
- Opening the door to peek lets out about 20% of the heat.
- Use the microwave when cooking small quantities of food or heating leftovers.



Dishwasher

- A full load of dishes uses less hot water than washing the same amount by hand. Do not overload.
- Soak or pre-wash only when there is burned-on or dried-on food.
- Let the dishes air dry instead of using the heated drying cycle.



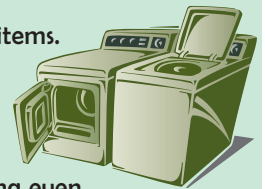
Refrigerator/Freezer

- Overcrowding items in the refrigerator obstructs the air circulation, reducing the ability to cool.
- Retrieve items quickly – cold air spills out each time the door is opened.
- Thawing frozen food in the refrigerator, before cooking, helps to keep the refrigerator cool.

Clothes Washer/Dryer

- Use cold water whenever possible. Hot water accounts for about 90% of the energy used by the washing machine.
- Set the correct water level for the size of your load.
- Dry full loads, but don't overload. Avoid running the dryer unnecessarily for one or two items.

- Select the proper temperature to avoid over-drying and wasting energy.
- Clean the lint filter each time to maintain the dryer's efficiency.
- Do not add wet items to partially dried items.
- Remove clothes promptly to minimize wrinkles and the need to iron.



WATER

- Take showers instead of tub baths. Cutting even two minutes per shower can save many kilowatts of power.
- Turn off the faucet while brushing teeth or shaving.
- A leaking faucet? Please inform the manager posthaste. A "drop" each second can waste many gallons of water as well as kilowatts of energy power.



LIGHTING

- Turn off all lighting fixtures when you leave the room, of unit, for longer than 15 minutes.
- Open draperies to make use of natural light during the day instead of turning on a light.

KEEP COOL!

- Close the draperies of your vacation unit to keep out the sun's heat.
- Close windows and doors when the air conditioner is running.
- Use ceiling fans instead of air conditioners. On really hot days, use the fans to increase air circulation, then raise the thermostat to the warmest comfortable setting. Each degree above 75°F saves approximately 3% in energy.
- In Hawaii, open the windows and lanai doors to enjoy the cooling trade winds. 🌬️



Plan ahead to avoid losing any of your weeks.
Remember: Your week expires 3 years after it is credited to your account.

ROYAL ALOHA VACATION CLUB 2009 FEES SCHEDULE

DESCRIPTION	AMOUNT
Annual Dues (per week)	
ONE-BEDROOM	\$611.00
TWO-BEDROOM	\$746.00
Energy Surcharge (per week of occupancy)	
ONE-BEDROOM	\$30.00
TWO-BEDROOM	\$40.00
<i>(For less than one-week occupancy, the charge is \$7 per day)</i>	
Christmas Surcharge (per week)	
ONE-BEDROOM	\$200.00
TWO-BEDROOM	\$250.00
3rd-Party Collection Fees	Actual charges/ commission levied by 3rd-party collection agent(s)
Delinquent accounts will be referred to 3rd-party collection agent(s) when they are 90 or more days delinquent.	
Weekly Occupancy Taxes (rates subject to change)	
HAWAII one-bedroom	\$24.00
HAWAII two-bedroom	\$29.00
Reinstatement of Week Lost Due to Late Cancellation (LATE CANCELLATION = LESS THAN 60 DAYS' NOTICE)	\$200.00
Reservation Upgrade Fee (per week)	
Upgrade from a one-bedroom to a two-bedroom unit <i>(Within 60 days and on a space-available basis)</i>	
Member	\$150
Non-Member	\$190
Direct Exchange Fee (per week)	\$135.00
Membership Transfer Fee (per transfer document processed)	
Immediate Family	\$225.00
Non-Family	\$500.00
Reinstatement of Canceled Membership	
Per year from date of termination; plus all delinquent charges <i>(Subject to availability of memberships)</i>	
NSF/Returned Check	\$35.00
Direct-Dial, Long-Distance Calls from RAVC Units	
SERVICE CHARGE (in addition to actual LD telephone charges) <i>(To avoid the service charge, please use credit cards or calling cards)</i>	
	\$20.00
Annual Dues Late Charge for first 30 days 1.5% per month thereafter	\$25.00
Cleaning Fee for Smoking in RAVC Units	\$75.00
Waikiki Parking Charge	
Per Week	\$45.00
Per Day	\$10.00
Fax Charges	
Incoming	\$0.25 per page
Outgoing	
Within United States	\$0.75 per page
To Foreign Countries	\$3.00 per page



Channing Bridges
Vice President of
Marketing & Sales


Welcome to Channing's Corner.

I'm pleased to introduce three new services you can access from www.ravc.com. Once you're on the home page, click on Travelers' Resources. You will see: Flight Reservations, Weekly Activity Packages, and Concierge 808.

Flight Reservations directs you to thousands of discounted airfares and/or car rental rates offered by Get2Hawaii. These fares are valid not just for Hawaii but for flights, with or without a rental car, from your nearest airport to almost every RAVC location and many other popular destinations.


Weekly Activity Packages directs you to Great Life Tours. Ann Dowie with GLT conducts Royal Aloha's Tuesday morning briefings in Waikiki. You can research special offers and new optional activities available in the Hawaiian Islands, even before you leave home!

Finally, RAVC is pleased to offer Joelle Johnson's **Concierge 808**, an exclusive personal service for our members vacationing in Waikiki. Joelle offers pre-arrival services including round-trip airport transfers, grocery shopping, baby and physically challenged equipment, restaurants known only to "locals" and personal walking tours of Chinatown! Click on Concierge 808. Joelle just might become your best friend in Hawaii.

We hope you enjoy these new member services. If you have any ideas or suggestions, feel free to contact me at channingbridges@ravc.com. 

COMMENT CARD WINNER THIRD QUARTER, 2008

Shirley Kidwell
Tacoma, Washington

Fill out a comment card after your next Royal Aloha vacation for a chance to win a week of accommodations at TorreBlanca, Acapulco. 

E-mail your vacation pictures to ravc@ravc.com and share your vacation memories with fellow members.

Fees and Reimbursed Expenses

Paid to the Board of Directors for services rendered during the fiscal year ended November 30, 2008:

<u>Professional Directors</u>	<u>Fees</u>	<u>Expenses¹</u>
George "Red" Morris, Hawaii	\$24,500	\$ 967
Edward Swofford, Hawaii	25,200	1,780
<u>Member Directors</u>		
John Arney ² , Colorado	3,625	2,745
James Bordian, British Columbia	7,925	4,299
Charles Burgett ² , California	1,650	2,793
Harry Cummings, Washington	4,950	3,147
Donald Graves, Texas	6,225	5,105
Ted Rohde, Arkansas	5,225	5,588

¹ The difference in the amount for each director is partly due to the variation of the board assignments requiring additional travel and other expenses.

² Term was for only part of 2008.

Promotional Packages Available

Acapulco/Chandler/Spain

Book one week in **Acapulco**, stay an EXTRA WEEK for only \$250
May - October 2009

Book one week in **Chandler**, stay an EXTRA WEEK for only \$250
June - September 2009

Book one week in **Spain**, stay an EXTRA WEEK for only \$280
November 2009 - March 2010

Annual Meeting of Members: May 9, 2009

Hilton Waikiki/Prince Kuhio Hotel
Honolulu, Hawaii

Recognition Award

RCI has presented a HOSPITALITY AWARD for 2009 to Royal Aloha Spain.


RCI members rated the hospitality and service of RAVC Spain to be among the highest in Europe.

Attention E-Mailers....

Please remember to put your **membership number** in the subject line so the spam filter will not discard your message.

If you do not get a response within a day or two, please telephone the Executive Office (808-847-8050) or the Reservations Department (800-367-5212).

It is especially important to follow up if your e-mail is "urgent" and you have not received a prompt response.

Everyone expects vacations to be relaxed and carefree. If you discover a problem, please inform the manager immediately so repairs can be made with minimal disturbance. 

To reach Royal Aloha:

**Toll-free reservations from USA,
Canada and Hawaiian Islands .. 1-800-367-5212**

Executive Office (808) 847-8050

Reservations Office (808) 847-8040

Fax (808) 841-5467

E-mail info@ravc.com

Home Page www.ravc.com



THE ROYAL ALOHA VACATION CLUB

1505 Dillingham Boulevard
Dillingham Shopping Plaza, Suite 212
Honolulu, HI 96817

Memories for Generations®

PRESORTED
STANDARD
U.S. POSTAGE
PAID
HONOLULU, HI
PERMIT NO. 862